

Market Update: Record 2009 Leads to Slow Start in 2010

"Minimal new installations and current announcements for project delays or downgrades in 2010 are the consequences of inaction to provide a serious market signal," said AWEA CEO Denise Bode. "Manufacturing, which has the potential to employ many more Americans in good, clean energy jobs, remains uncertain. A firm, long-term national commitment to renewable energy is still needed for the U.S. to become a wind turbine manufacturing powerhouse and create hundreds of thousands of jobs."

**FOR MORE INFORMATION,
PLEASE CONTACT:**

Kathy Belyeu
Manager of Industry
Information Services

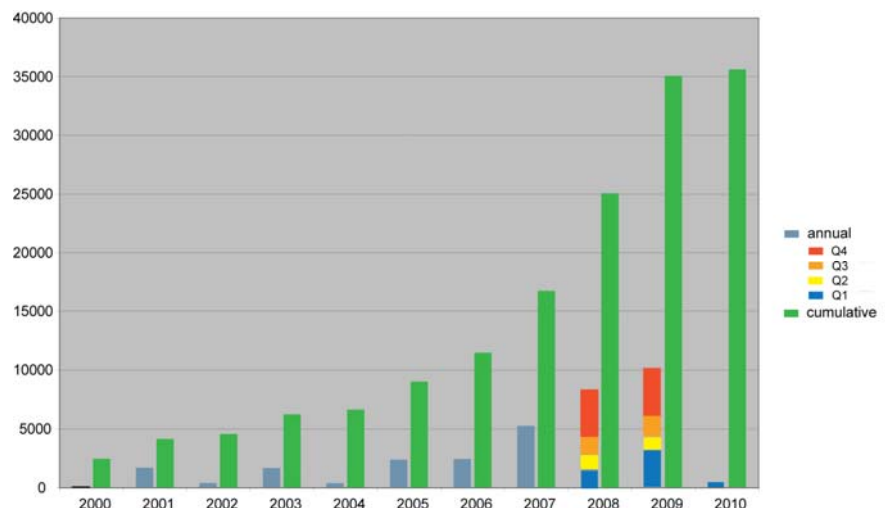
Kathy_Belyeu@awea.org
202-383-2520

The U.S. wind industry broke all previous records by installing nearly 10,000 megawatts (MW) of new generating capacity in 2009 (enough to serve over 2.4 million homes). These new projects place wind power neck and neck with natural gas as the leading source of new electricity generation for the country. Together, the two sources account for about 80% of the new capacity added in the year.

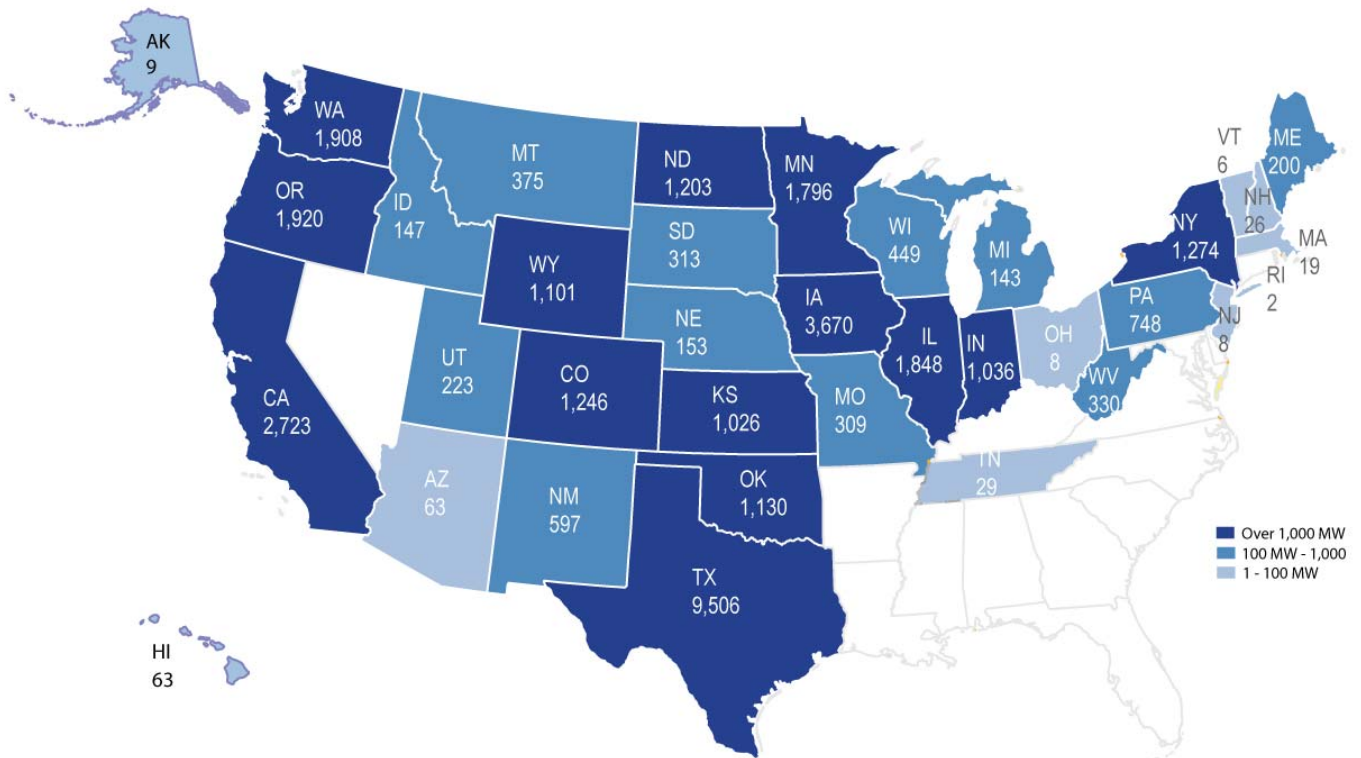
The first quarter of 2010, however, saw only 539 megawatts (MW) of new wind power capacity in the U.S., the lowest first quarter figure since 2007. While the industry worked diligently to accelerate shovel-ready projects in 2009 and installed over 10,000 MW, continued lack of long-term market signals, combined with low power demand and price, has allowed the pipeline for advanced projects to slow over the past 18 months.

The total wind power capacity now operating in the U.S. is over 35,600 MW, generating enough to power the equivalent of 9.7 million homes. America's wind power fleet will avoid an estimated 62 million tons of carbon dioxide annually, equivalent to taking 10.5 million cars off the road, and will conserve approximately 20 billion gallons of water annually, which would otherwise be consumed for steam or cooling in conventional power plants.

The manufacturing sector is also suffering from the lack of long-term policy and market signals. Investment in the manufacturing sector dropped in 2009 compared to 2008, with one-third fewer wind power manufacturing facilities coming online or being announced or expanded during the year. The result was net job losses in the manufacturing sector, which were compounded by low orders and high inventory. Looking forward, the critical Recovery Act manufacturing incentives that were announced only at the start of 2009 will need to be supplemented with the hard targets of a national Renewable Electricity Standard.



- There are 36 states that have utility-scale wind projects and 14 states are in the "Gigawatt Club" with more than 1,000 MW of installed wind capacity per state.
- In state rankings, Iowa leads in terms of percentage of electricity from wind power, getting 14% of its power from the wind, and also leads in highest number of jobs in the manufacturing sector. Texas consolidated its lead in wind capacity and in largest wind farms installed.
- Approximately 85,000 people are employed in the wind industry today and hold jobs in areas as varied as turbine component manufacturing, construction and installation of wind turbines, wind turbine operations and maintenance, legal and marketing services, transportation and logistical services, and more.
- To ensure a skilled workforce across the wind energy industry, 205 educational programs now offer a certificate, degree, or coursework related to wind energy. Of these 205 programs, the largest segments are university and college programs (45%) and community colleges or technical school programs (43%).
- Despite the economic downturn, the demand for small wind systems for residential and small business use (rated capacity of 100 kW or less) grew 15% in 2009, adding 20 MW of generating capacity to the nation. Seven small wind turbine manufacturing facilities were opened, announced or expanded in 2009.



For a complete list of projects and manufacturing facilities added in 2009, please go to www.awea.org/projects.

Updated May 2010